

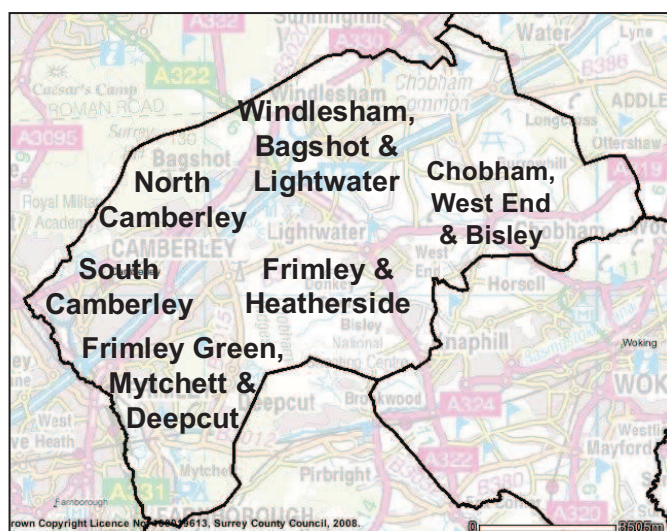
13. Surrey Heath

Education in Surrey Heath

There are 27 primary age schools in Surrey Heath, 5 of which have nursery provision. There are 4 secondary schools all of which have post-16 provision. There is no College provision in the Borough and there are no short stay schools in the Borough. There are three Special Schools providing services for children and young people with behavioural, emotional or social difficulties and learning difficulties. Maps at the end of this section give an overview of the educational provision that is available in the Borough. This includes all Primary and Secondary Schools in the Borough. Locations of all Special School, Short Stay School, Sixth form/College provision in Surrey Heath is provided in appendix B.

Planning areas in Surrey Heath

13.2 Surrey Heath is made up of 6 individual primary planning areas as identified in the map. Each primary age school is allocated to one of these planning areas and projections of need for primary school places are made based on the transfer rates of the number of births in each planning area compared to the number of reception year pupils there are 4 years later.



13.3 Surrey Heath is split into two secondary planning areas. Forecasts are made for Gordon's school in the east of the Borough separately from the remaining secondary schools to the west of the Borough.

PRIMARY

Historic numbers of primary pupils in Surrey Heath

13.4 The table below provides historical information on the total number of available primary places in Reception in Surrey Heath (the PAN), compared with the actual pupils in reception year. This provides the number of spare places across the Borough (a negative figure shows a shortage of places compared with the current PAN). Parental preferences are given to indicate the demand for places each year.

Year	PAN	Highest Ranking Preference	Pupils in Reception Year	Spare Reception places	Total Places	Total NOR	Surplus Places	% Surplus Places
2006	1032	835	881	151	7086	6330	756	10.7
2007	1032	1002	935	97	7086	6354	732	10.3
2008	1002	945	966	36	7086	6355	731	10.3
2009	1002	940	980	22	7086	6364	722	10.2
2010	1017	944	976	41	7086	6337	749	10.6
2011	1037	938	982	55	7086	6427	659	9.3

Actions that were taken to provide primary places in September 2011

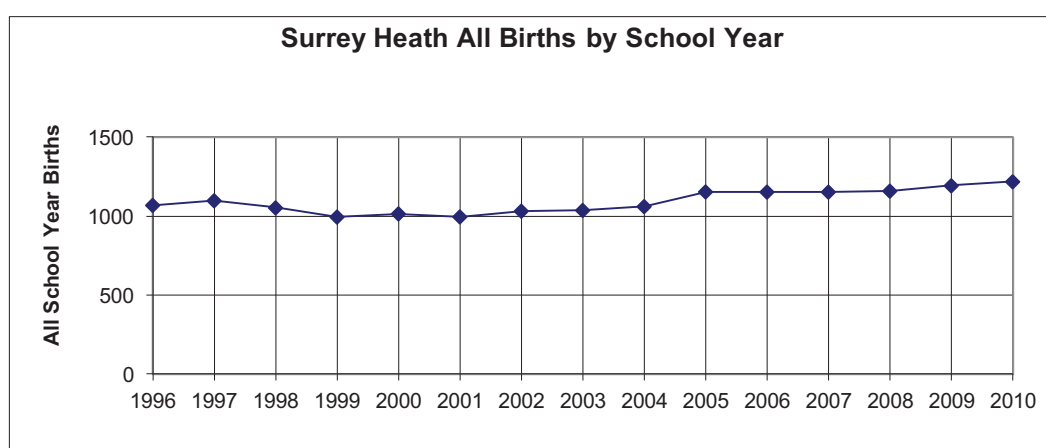
13.5 There were no actions taken to provide additional primary places for 2011.

Births in Surrey Heath

13.6 Based on figures provided by the Office for National Statistics, births in Surrey Heath dipped from 1997 reaching a low point in 2001. Since 2001, the birth rate has increased most years, with a slight dip in 2004 & 2005. By 2010 the birth rate had increased by nearly 137 per year since 2001, an increase of over 15%. This increase in births will lead to a continuously (albeit slight) increasing number of children starting primary, and in the longer-term, secondary schools in Surrey Heath in the foreseeable future. It should be noted that this increase is unlikely to be evenly spread across the Borough. Therefore some primary areas in Surrey Heath will experience more pressure for school places than others.

All actual births to School Year 2010/11

School Year	1996	1997	1998	1999	2000	2001	2002	2003	2004	2005	2006	2007	2008	2009	2010
Births	1008	1020	994	956	898	895	916	966	942	956	999	1023	1002	1014	1032



Surrey Heath forecasts

13.7 The need for primary school places depends on the local child population. The key factor is the number of births in an area. Pressure for primary places lags 4 years behind changes in the birth rate, and pressure for secondary places follows another 7 years later. The table below identifies the actual demand for reception places in Surrey Heath to 2011 and the estimated need for places in the future (to 2016). The increase in births in Surrey Heath leads to an increase in demand for school places at both a primary and a secondary level in the future.

School Year	2006	2007	2008	2009	2010	2011	2012	2013	2014	2015	2016
4+ Demand	881	935	966	980	976	982	1012	1024	1032	1036	1050
11+ Demand	784	820	783	810	830	753	696	700	719	778	787

13.8 The table below estimates the number of pupils that will require a reception place in a primary school in Surrey Heath from 2012 – 2021. This is compared with the total number of available places in Surrey Heath in the future (the PAN). The 'spare' places refer to the projected demand compared with the total number of available places. On the basis of the known increase in birth rate and projected housing completions, the number of children entering primary is set to continue to increase over the next 10 years.

Year	PAN	Pupils in Reception Year	Spare Reception places	Total Places	Total NOR	Surplus Places	% Surplus Places
2012	1037	1012	25	7086	6539	547	7.7
2013	1037	1024	13	7086	6678	408	5.8
2014	1037	1032	5	7086	6773	313	4.4
2015	1037	1036	1	7086	6866	220	3.1
2016	1037	1050	-13	7086	6968	118	1.7
2017	1037	1061	-24	7086	7071	15	0.2
2018	1037	1085	-48	7086	7195	-109	-1.5
2019	1037	1112	-75	7086	7311	-225	-3.2
2020	1037	1139	-102	7086	7430	-344	-4.9
2021	1037	1134	-97	7086	7525	-439	-6.2

Actions taken to provide primary places in 2012 and implications for the future planning period

- 13.9 There are currently a small number of spare reception places in Surrey Heath primary schools and no action was taken to provide additional school places in 2012. By 2013 primary reception places are likely to become very tight. A shortage of places will start in 2016 and this shortage will increase to 2020 where over three additional forms of entry will be required. In Surrey Heath, there is an overflow of applications across boundaries and planning areas, particularly in urban areas that may mitigate some of this additional demand. Furthermore, the pattern of applications tends to vary according to the availability of places in previous years. This leads to variations in pressure for places in adjacent planning areas. The situation will need to be monitored over the years as it is somewhat dynamic. Additional provision will be needed in the rural areas if the demand increases as forecast.
- 13.10 The projected additional demand is not evenly spread across the Borough. The North Camberley and South Camberley areas are tight but are not expected to experience a shortfall in places in the shorter term. Small shortages of places in Frimley Green, Mytchett & Deepcut, Windlesham, Bagshot & Lightwater and Chobham, West End and Bisley are projected in the shorter term, however the projections in these areas have historically overestimated numbers in these areas. The forecast for the Frimley & Heatherside area continues to show spare places throughout the forecast period.
- 13.11 Officers are planning to provide an additional form of entry in reception and Year 3 in the Bagshot, Windlesham and Valley End area from 2014. Places in Camberley and Chobham, West End and Bisley will be kept under review.

Accuracy of Primary forecasts

- 13.12 It is useful to understand how accurate the forecasts are year on year. This can be done by comparing the number of reception pupils that were allocated a place in Surrey Heath in 2011 with the number that was forecast in the previous year.
- 13.13 Pupil numbers in reception in 2011 were 23 lower than indicated in the November 2010 forecasts, meaning the forecast overestimated demand by 2.4%.
- 13.14 The forecasts are based on historic trends, so where Reception numbers increase owing to a step-change in places available, and these places are taken up, the historic trend will include this increase in numbers and, therefore, tend to overestimate numbers in that area by assuming they will continue to increase. In areas where numbers have not increased significantly in line with previous forecasts, there will be a decreased trend, and future numbers will then tend to be underestimated.
- 13.15 There was variation between planning areas: the Frimley & Heatherside area had 18 more pupils than forecast (-6.9%); the Frimley Green Mytchett & Deepcut area had 6 fewer pupil than forecast (-4.4%); and the South Camberley area had 8 fewer pupils than forecast (7.5%). The North Camberley area had 6 fewer pupils than forecast (-4.9%). The Windlesham, Bagshot & Lightwater area had 3 fewer pupils than forecast (-1.3%); and the Chobham, West End & Bisley area had 14 fewer pupils than forecast (0.8%).

SECONDARY

Historic numbers of Secondary pupils in Surrey Heath

- 13.16 The table below provides historical information on the total number of available secondary places in year 7 in Surrey Heath (the PAN), compared with the actual number of year 7 places that were taken up. This provides the number of spare places in the Borough (a negative figure shows a shortage of places). Parental preferences are given to indicate the demand for places each year.

Year	PAN	Highest Ranking Preference	Pupils in Year 7	Spare Year 7 places	11-16 Places	Total NOR	Surplus Places	% Surplus Places
2006	845	831	784	61	4225	4204	21	0.5
2007	845	816	820	25	4225	4202	23	0.5
2008	845	884	783	62	4225	4119	106	2.5
2009	875	855	810	65	4375	4082	293	6.7
2010	875	882	830	45	4375	4096	279	6.4
2011	874	825	753	121	4370	4038	332	7.6

Actions that were taken to provide secondary places in September 2011

13.17 There were no actions taken to provide additional secondary places in September 2010.

Secondary forecasts in Surrey Heath

13.18 Our estimates of future need for secondary places is based on taking the historic transfer ratio from Year 6 to Year 7 in the borough, and applying this to our estimated numbers for future Year 6 cohorts. The transfer ratios have been reasonably consistent for the last three years, rising slightly between 2008/9 and 2009/10 before dropping back. The table below indicates that the number of year 7 students starting in secondary education in Surrey Heath is (on a three year average) 88% of the number of year 6 pupils the academic year prior. This suggests that there are a number of year 6 pupils that apply for school in independent education and/or that pupils are travelling out of the Borough to attend secondary school. The past ratios are as follows:

	Year 6	Year 7	Transfer ratio
2008 to 2009	914	810	0.89
2009 to 2010	925	830	0.9
2010 to 2011	879	753	0.86
Average			0.88

13.19 Based on the transfer ratios presented above, the table below estimates the number of pupils that will require a secondary school place in Surrey Heath from 2012 – 2021. This is compared with the total number of available places in Surrey Heath in the future (the PAN). The 'spare' places refer to the projected demand compared with the total number of available places.

Year	PAN	Pupils in Year 7	Spare Year 7 places	Total NOR	11-16 Places	Surplus Places	% Surplus Places
2012	875	696	179	3914	4375	461	10.5
2013	875	700	175	3815	4375	560	12.8
2014	875	719	156	3719	4375	656	15
2015	875	778	97	3671	4375	704	16.1
2016	875	787	88	3710	4375	665	15.2
2017	875	795	80	3827	4375	548	12.5
2018	875	812	63	3954	4375	421	9.6
2019	875	853	22	4097	4375	278	6.4
2020	875	876	-1	4199	4375	176	4
2021	875	889	-14	4294	4375	81	1.9

Actions taken to provide secondary places in 2012 and implications for the future planning period

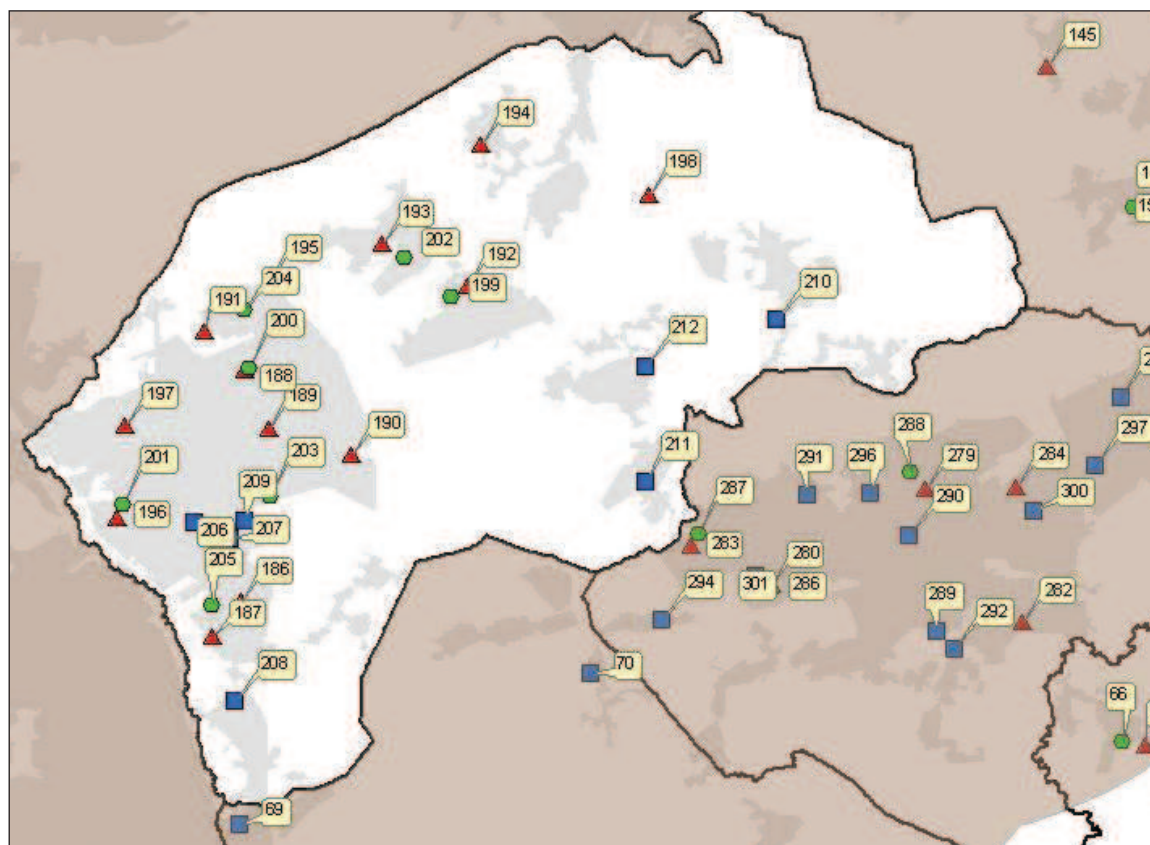
13.20 The projected surplus of Year 7 places over the next 4-5 years in particular is a matter of concern. The projected surplus has threatened the viability of Kings

International School for Business and the Arts which has been the lowest subscribed school in the area for a number of years. Although the number of spare places is expected to reduce from 2016, it is still projected to be significantly greater than in the recent past and makes provision of an acceptable secondary curriculum challenging in the short term. The County Council is supporting the existing arrangement between Tomlinscote School and Kings College to secure the viability of provision in this area.

Accuracy of secondary forecasts

- 13.21 It is useful to understand how accurate the forecasts are year on year. This is done by comparing the number of year 7 pupils that were allocated a place in Surrey Heath secondary schools in 2011 with the number that was forecast in the previous year.
- 13.22 There were 20 fewer Year 7 pupils in schools in 2011 than indicated by the November 2010 forecast, which is a difference of 2.6%. The Camberley area had 25 fewer pupils than forecast, a difference of 3.7%. The East Surrey Heath area had 5 more pupils than forecast, a difference of 5.3%. The fraction of Year 6 pupils that transferred to secondary schools in the area was similar to the average of the previous three years.

Primary schools in Surrey Heath and surrounding area



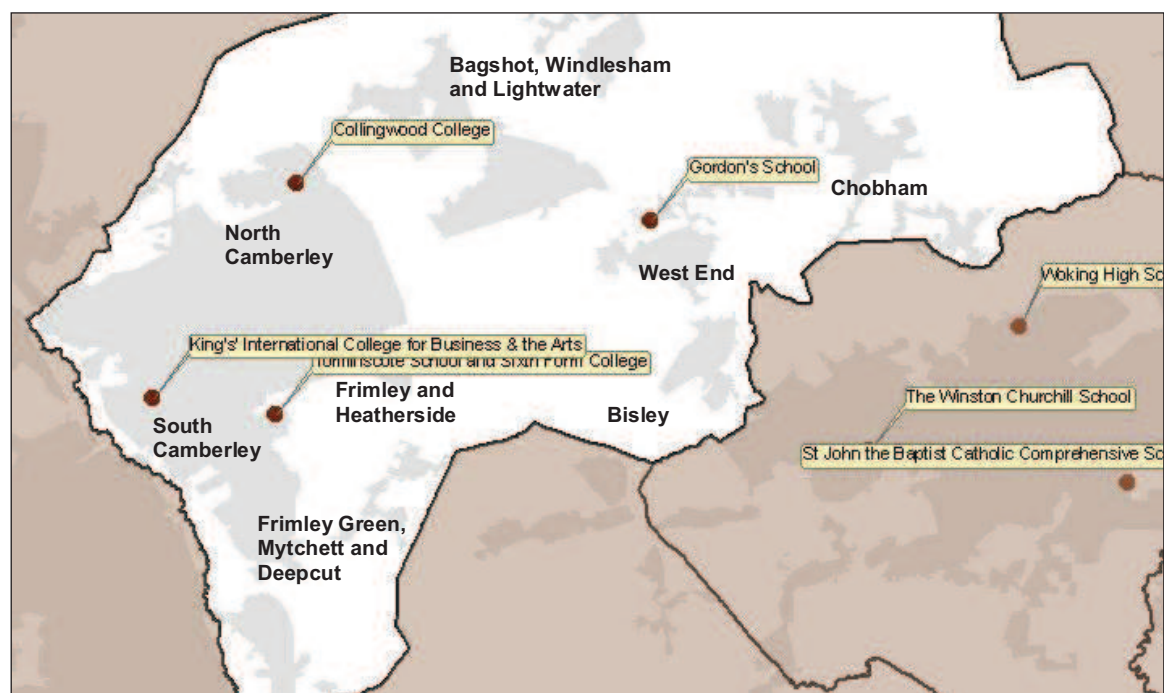
Legend

- Primary School
- Junior School
- ▲ Infant School

ID	School Name	ID	School Name
186	Sandringham School	200	Crawley Ridge Junior School
187	Cross Farm Infant School	201	The Watchetts Junior School
188	Crawley Ridge Infant School	202	Connaught Junior School
189	Prior Heath Infant School	203	Ravenscote Community Junior School
190	Heather Ridge Infant School	204	Cordwalles Junior School
191	Lorraine School	205	Frimley Church of England School
192	Lightwater Village School	206	The Grove Primary School
193	Bagshot Infant School	207	Lakeside School
194	Windlesham Village Infant School	208	Mytchett Primary School
195	Pine Ridge Infant and Nursery School	209	St Augustine's Catholic Primary School
196	Bristow Infant and Nursery School	210	Chobham St Lawrence CofE (Aided) Primary School
197	Camberley Infant School	211	Bisley Church of England (Aided) Primary School
198	Valley End C of E Infant School	212	Holy Trinity Church of England School
199	Hammond Community Junior School		

Note: Only primary schools in Surrey Heath are listed here.

Secondary schools in Surrey Heath and surrounding area



* Hidden school is Tomlinscote School and Sixth Form